

# **Development of People's Biodiversity Register in selected gram panchayat of Kullu district, Himachal Pradesh**

**HIMCOSTE, Kasumpti, Shimla, 27.03.2018**

**Presentation by**

**Dr. S. S. Samant, DSc, FNASc, FSE, Scientist-In charge**

**G. B. Pant National Institute of Himalayan Environment & Sustainable  
Development**

**Himachal Regional Centre, Mohal-Kullu-175 126, Himachal Pradesh**

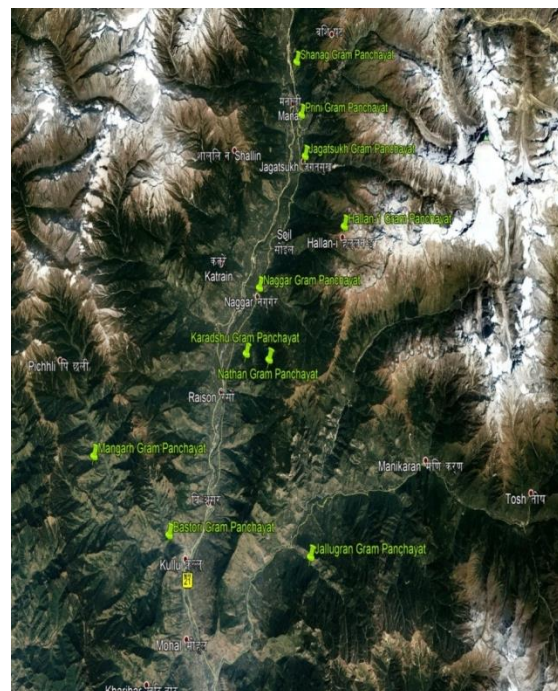
# Rationale

- ✓ The term Biodiversity is globally recognised as a corner stone of a healthy ecosystem.
- ✓ India, a mega bio-diverse country of the world is a land of Biological and Cultural diversity.
- ✓ NBA is working on the development of PBR through out the India for the mainstreaming and maintaining of bio resources and sustainable use of it.
- ✓ The state Himachal Pradesh is also known for the representative, natural, unique and socio-economically important biodiversity.
- ✓ The people of Himachal Pradesh is continue to depend on natural bio resources at varying scales and aspect.
- ✓ The diverse and large traditional and ethnic knowledge of the inhabitants of Kullu is passed from one generation to another.
- ✓ Hence, the notion behind the documentation of this undocumented indigenous and associated wealth of the communities is necessary for sustainable utilization and conservation of biodiversity towards a healthy future.

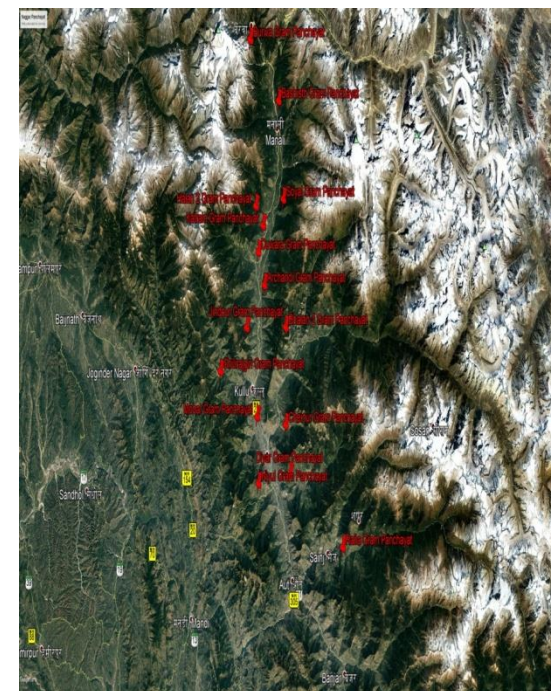
# Objectives

- ✓ To document the biodiversity components such as plants, animals, microbes, insects and their possible use by the local communities in the selected BMC
- ✓ To document topographic and socio economic features of the selected BMCs with special emphasis on human population, climate, topography, natural ecosystems, livestock resources, livelihood patterns etc.
- ✓ To document the traditional knowledge and accurate information about the BMC, ecosystem and its natural resources
- ✓ To facilitate and engage the trained youth in developing BMC
- ✓ To develop the reports on the program using the suitable self-monitoring and evaluation tools

# Study Area



**Fig. 1**



**Fig. 2**

**Fig. 1. Gram Panchayats surveyed:** Naggar, Nathan, Bastori, Karadshu, Jallugran, Mangarh, Jagatsukh, Prini, Halan 1 and Shanag

**Fig. 2. Gram Panchayats to be surveyed:** Burwa, Vashisth, Soyal, Halan 2, Katrain, Duwara, Archchandi, Jindour, Bhallan 2, Shilirajgiri, Mohal, Cheinur, Diyar, Niyul and Raila

# Methodology

- ✓ Field survey of panchayats was done and Interactions was made with the Biodiversity Management Committees (BMCs), Patwari, Gram Panchayat Pradhan, Vaidhyas and others
- ✓ Data collection-standard formats
- ✓ Collection of samples of the species
- ✓ Identification of the species with local and regional flora
- ✓ Analysis and validation of data
- ✓ Computation of information
- ✓ Preparation of People's Biodiversity Register (PBR)

# Achievements

## Map and demographic profile

### Wild Biodiversity

- Forest types
- Habitats
- Plants diversity
- Animal diversity
- Medicinal plants diversity
- Wild plant diversity
- Fodder plants
- Fuel plants
- Timber plants
- Fiber plants
- Religious plants

### Domesticated Biodiversity

- Plants diversity
  - Agricultural crop diversity
  - Horticultural crop diversity
  - Ornamental plants diversity
  - Religious plants
- Animal diversity (Mammals & Birds)
- Cultivated Medicinal plants diversity



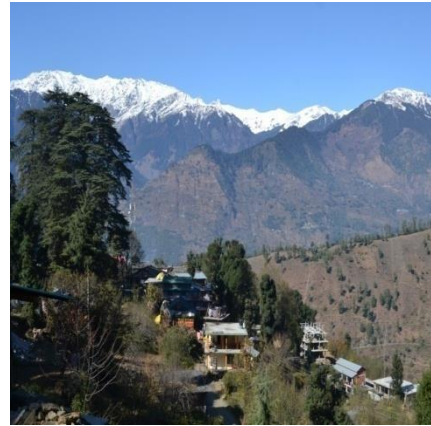
# General View of the villages



**Halan 1**



**Kullu**



**Larankelo**



**Nathan**



**Bastori**



**Nashala**



**Padei**



**Jallugran**



# Forest Types



***Cedrus deodara* Forest**



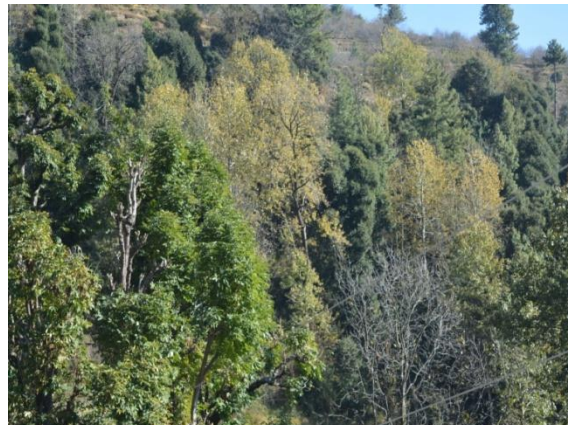
***Cedrus deodara-Pinus wallichiana* Forest**



**Riverine Forest**



***Cedrus deodara-Picea smythiana* Forest**



**Mixed Forest**



**Mixed Forest**



# Information generation-Standard format



**Bastori**



**Kradshu**



**Jallugran**



**Mangarh**



**BMC Members, Jallugran**



**BMC Members, Nathan**



**BMC Members, Naggar**



**BMC Members, Naggar**



**Nathan**



**Halan 1**



**Jagatsukh**



**Bastori**



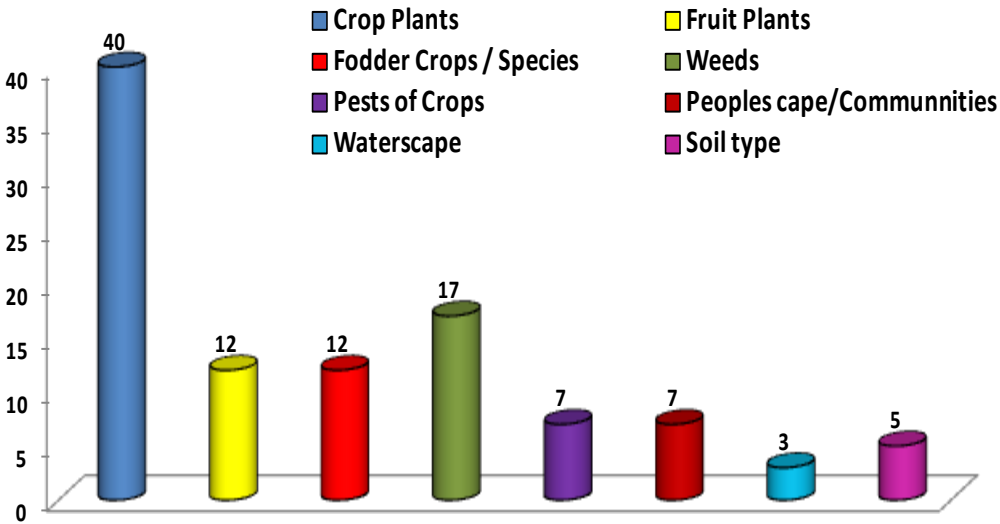
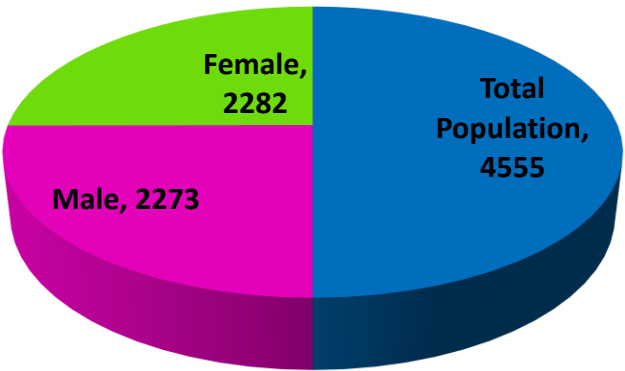
# Resource scape



# Achievements: Gram Panchayat, Naggar



Population Demography



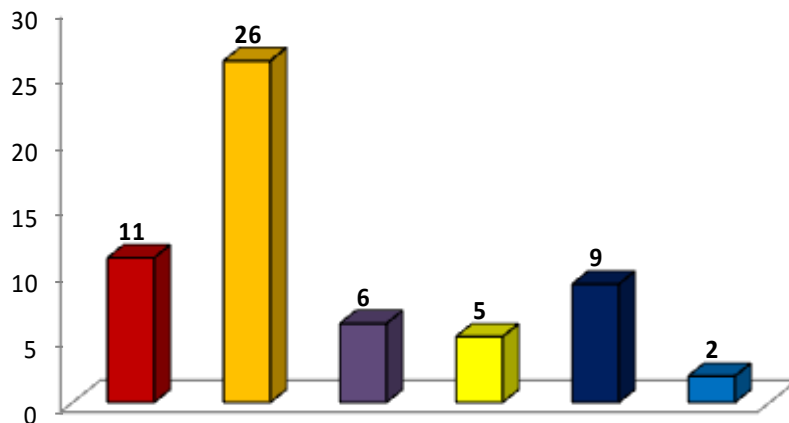
AGROBIODIVERSITY



# Achievements: Gram Panchayat, Naggar

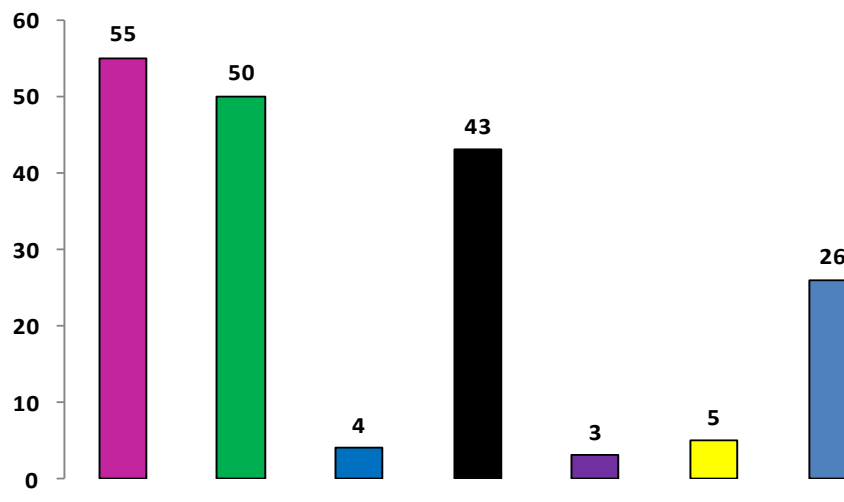
## DOMESTICATED BIODIVERSITY

- Fruit Trees
- Medicinal Plants  
(Herbs, Shrubs, Trees etc.)
- Ornamental Plants/ Trees/Climbers  
etc.
- Timber Plants / Trees
- Domesticated Animals



## WILD BIODIVERSITY

- Trees, Shrubs, Herbs, Tubers, Grasses, Climbers etc.
- Wild Plant Species of Importance
- Aquatic Biodiversity
- Wild Plants of Medicinal Importance
- Fumigate / Chewing Plants
- Timber Plants
- Wild Animals (Mammals, Birds, Reptiles, Amphibia, Insects, others)



# Possibilities for the modification of format

# Budget details

Total Gram Panchayats = 25

Budget received from Gram Panchayats= 23  
(i.e. Rs. 11,50,000.00/- only)

Budget not received from Shilirajgiri and Vashisht





*Thank you.....*